

# DUI In South Carolina



OCTOBER 30, 2014

# Murders in SC vs. DUI Fatalities

## 2007-2012



	<b>Murders*</b>	<b>DUI Fatalities**</b>
2007	356	464
2008	312	400
2009	317	374
2010	365	353
2011	325	309
2012	340	348
Total	2,015	2,248

\*Source – Crime in South Carolina – SLED

\*\*Source – NHTSA FARS Data

## Key Statistics



40%

of fatal traffic collisions in  
South Carolina involve an  
alcohol-impaired driver.

# Key Statistics



The

**#1**

contributing factor in fatal traffic collisions in South Carolina is

**DUI**

## Presentation Includes:



- Overall numbers, trends, percentages, and rates
- Number of fatalities and severe injuries
- Impaired driving

# Why is this discussion important?



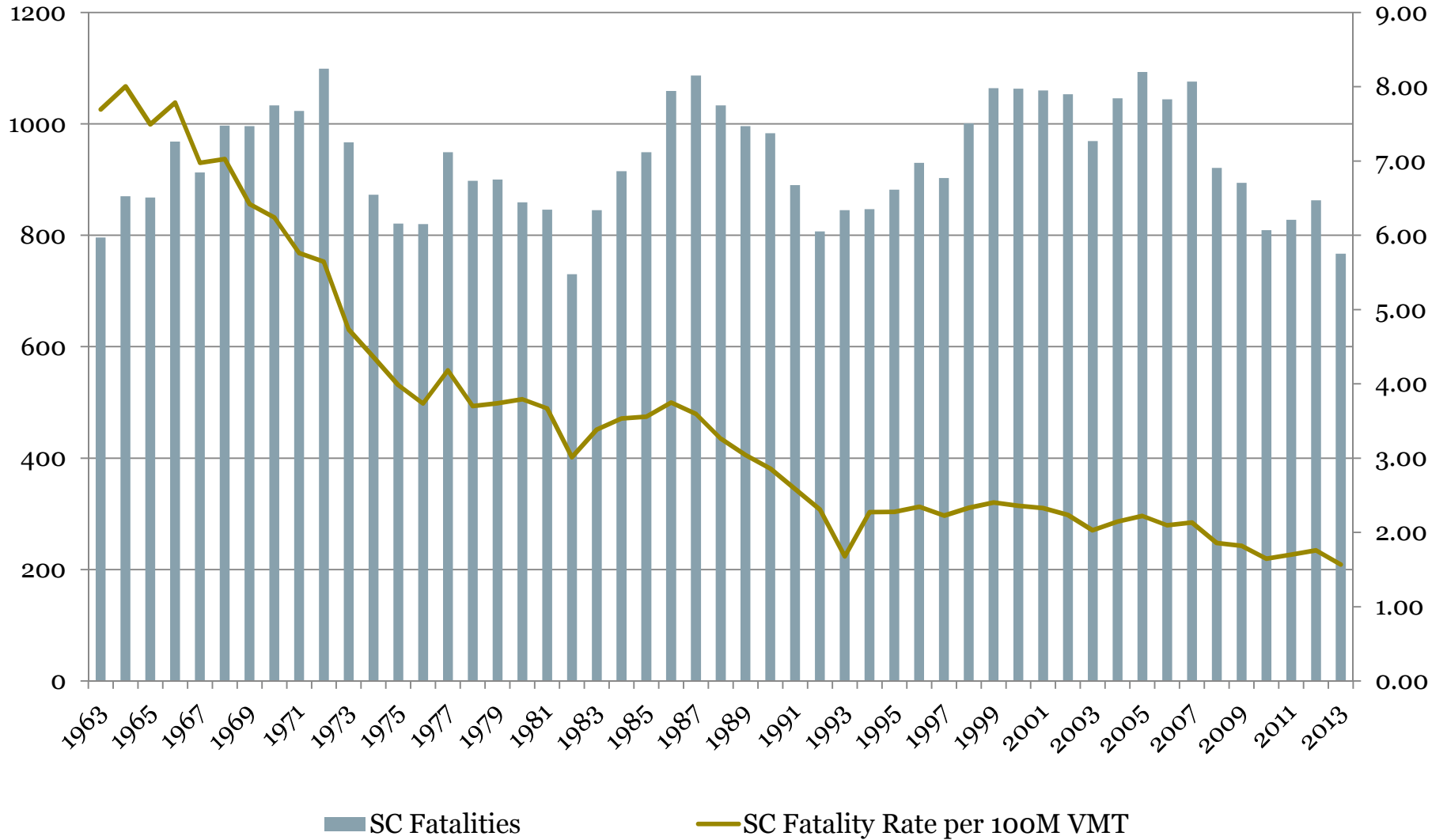
- **Comply with Special Conditions**
  - “Grant funded personnel must work only night and weekend shifts between the hours of 3PM and 6AM...”

# Note about the data



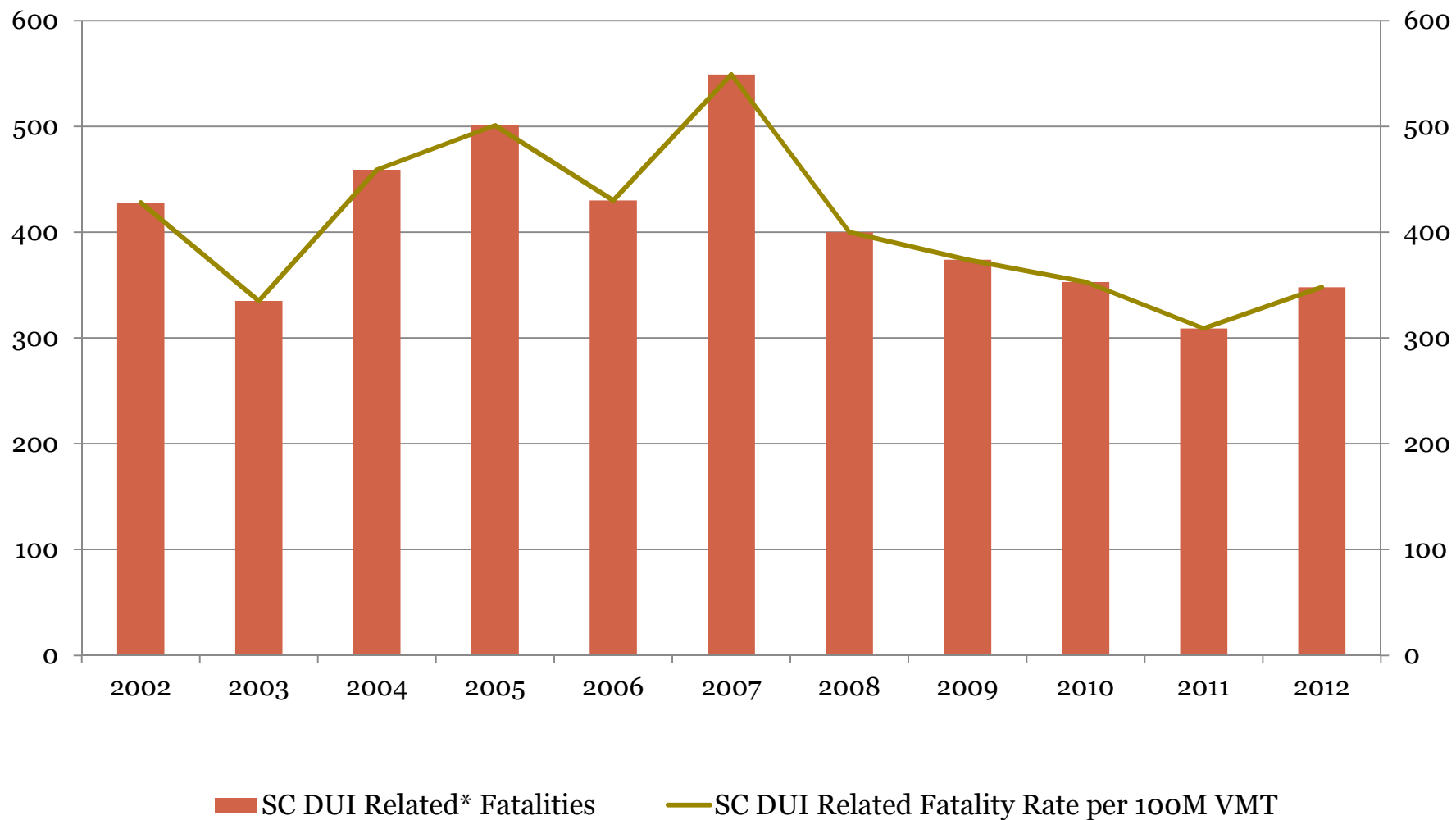
- All 2013 data are preliminary
- 2014 data are available for preliminary analysis (particularly if your Agency is using SCCATTS)

# Fatalities and Fatality Rate by Year in South Carolina





## DUI-Related\* Fatalities and Fatality Rate by Year in South Carolina



\*Data Source: 1981-2007 (State, DUI Related), 2008-2012 (FARS, Alcohol-Impaired Driver)

# Fatal & Severe Injury Collisions



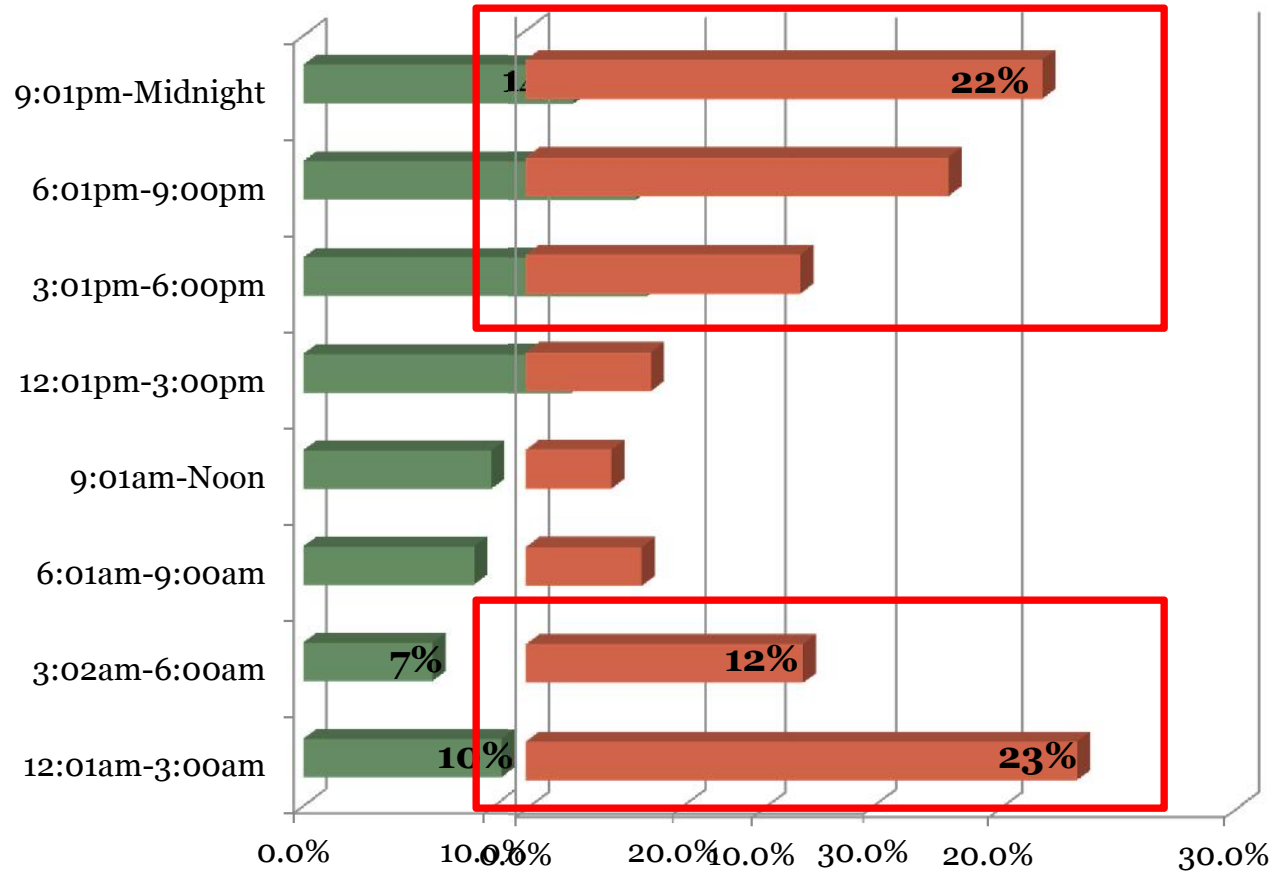
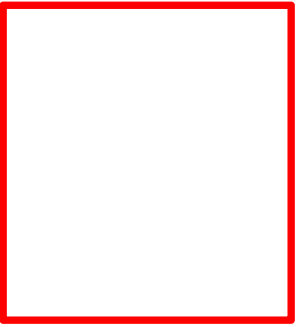
- More recent focus
- More data points
- More opportunities for change

# Fatal and Severe Injury Collisions, 2009-2013

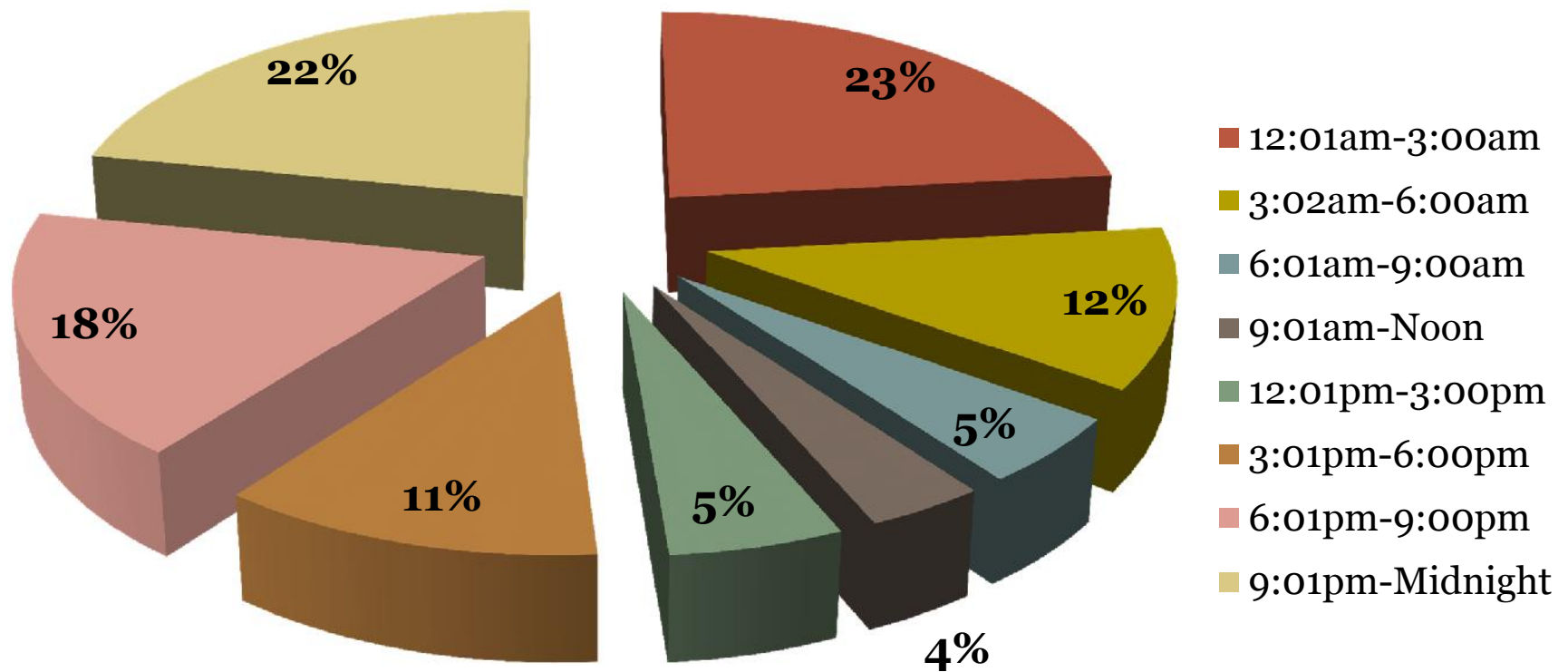


Crash Type	2009	2010	2011	2012	2013	% Change	
						12/'13	09-'12 Ave/13
Total	3,476	3,447	3,414	3,578	3,384	-5.4%	-2.7%
DUI	974	897	786	898	840	-6.5%	-5.5%
% DUI	28.0%	26.0%	23.0%	25.1%	24.8%		

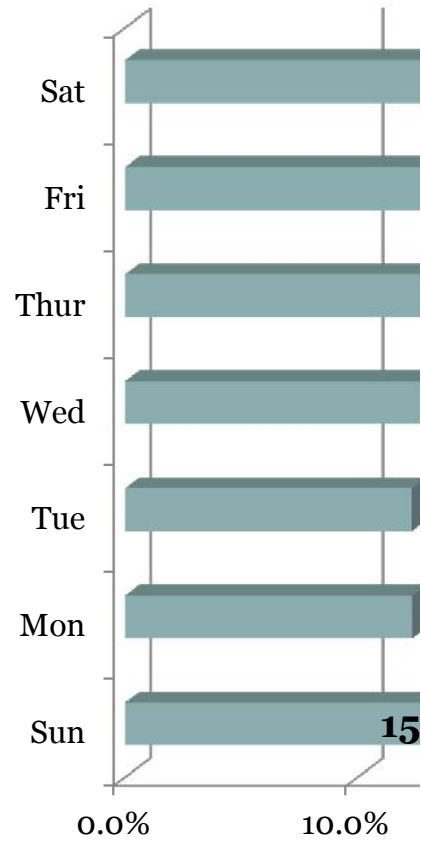
**Fatal and Severe Injury Collisions by Time of Day, 2009-2013**  
**Unrelated Fatal/Severe Injury Collisions by Time of Day, 2009-2013**



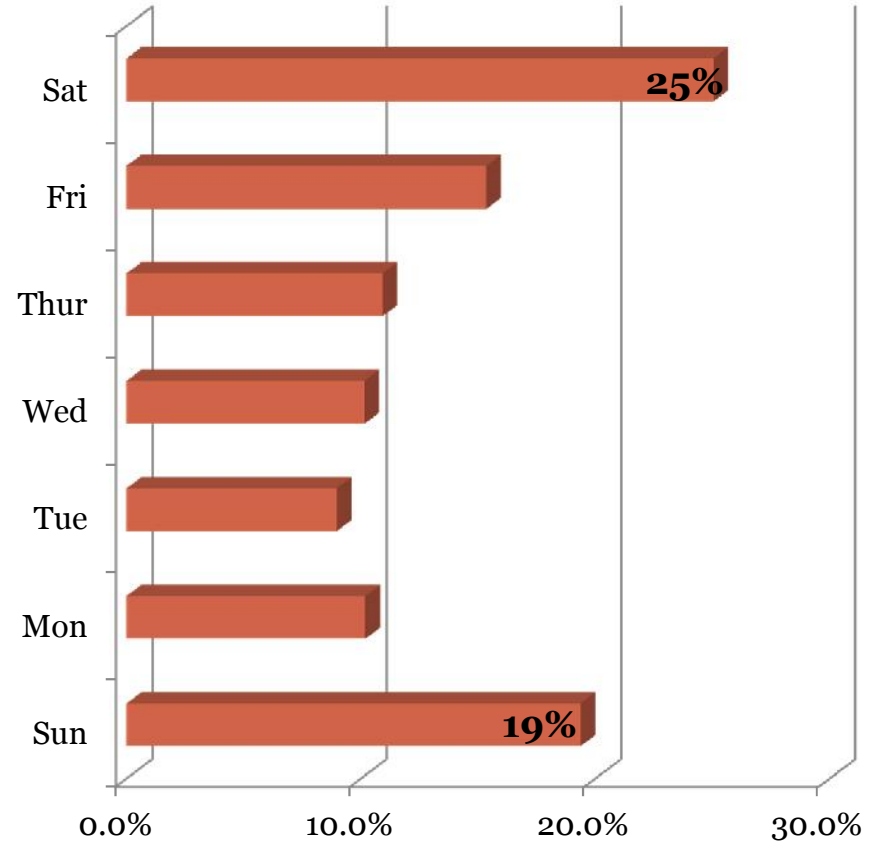
# DUI-Related F/SI Collisions by Time of Day



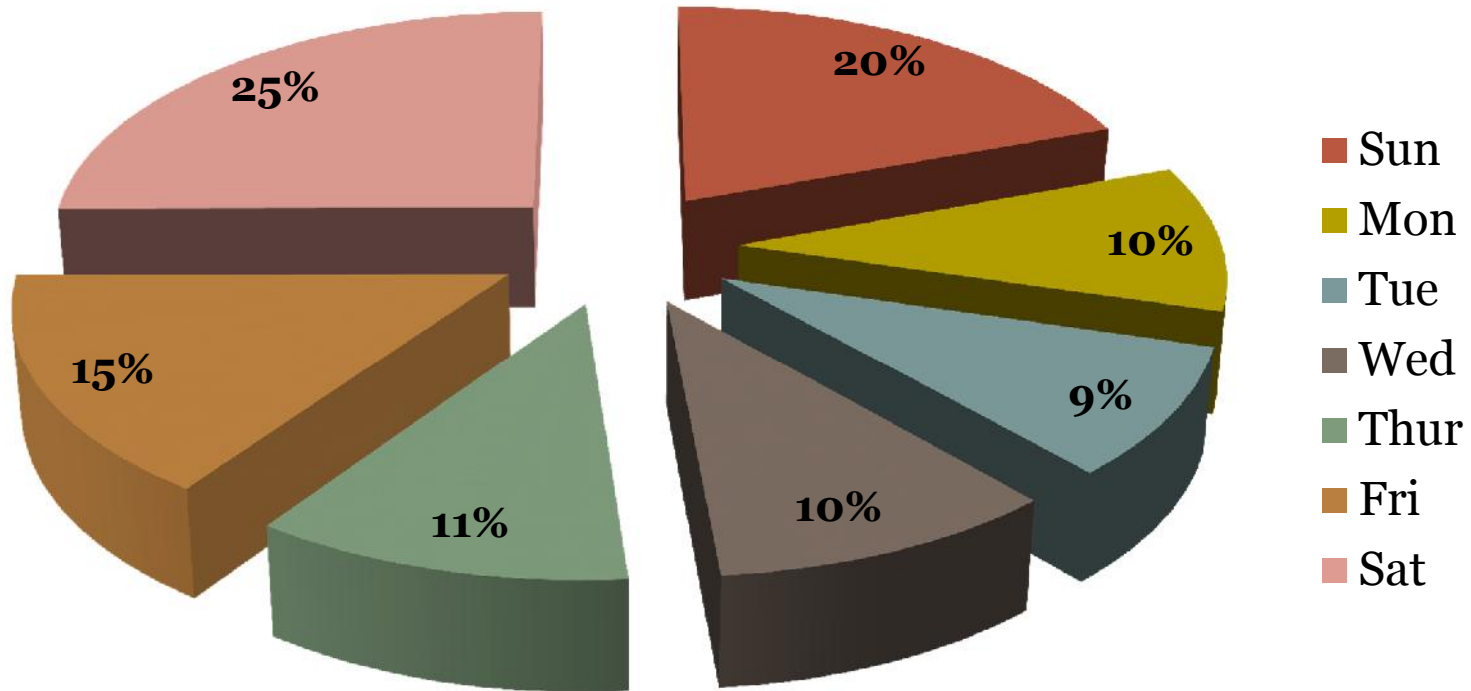
### Fatal and Severe by Day of W



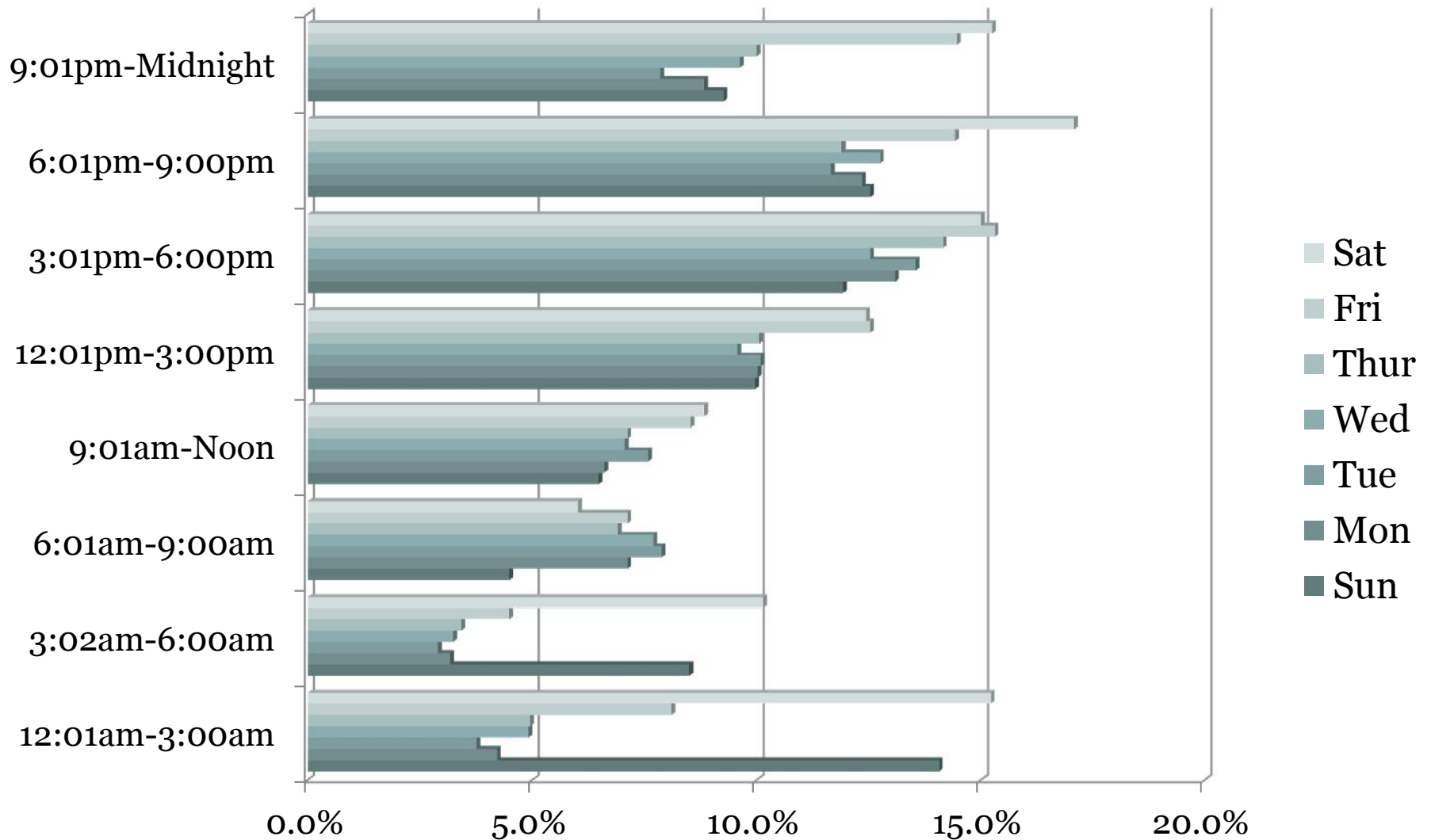
### DUI Related Fatal/Severe Injury Collisions by Day of Week, 2009-2013



# DUI-Related F/SI Collisions by Day of Week

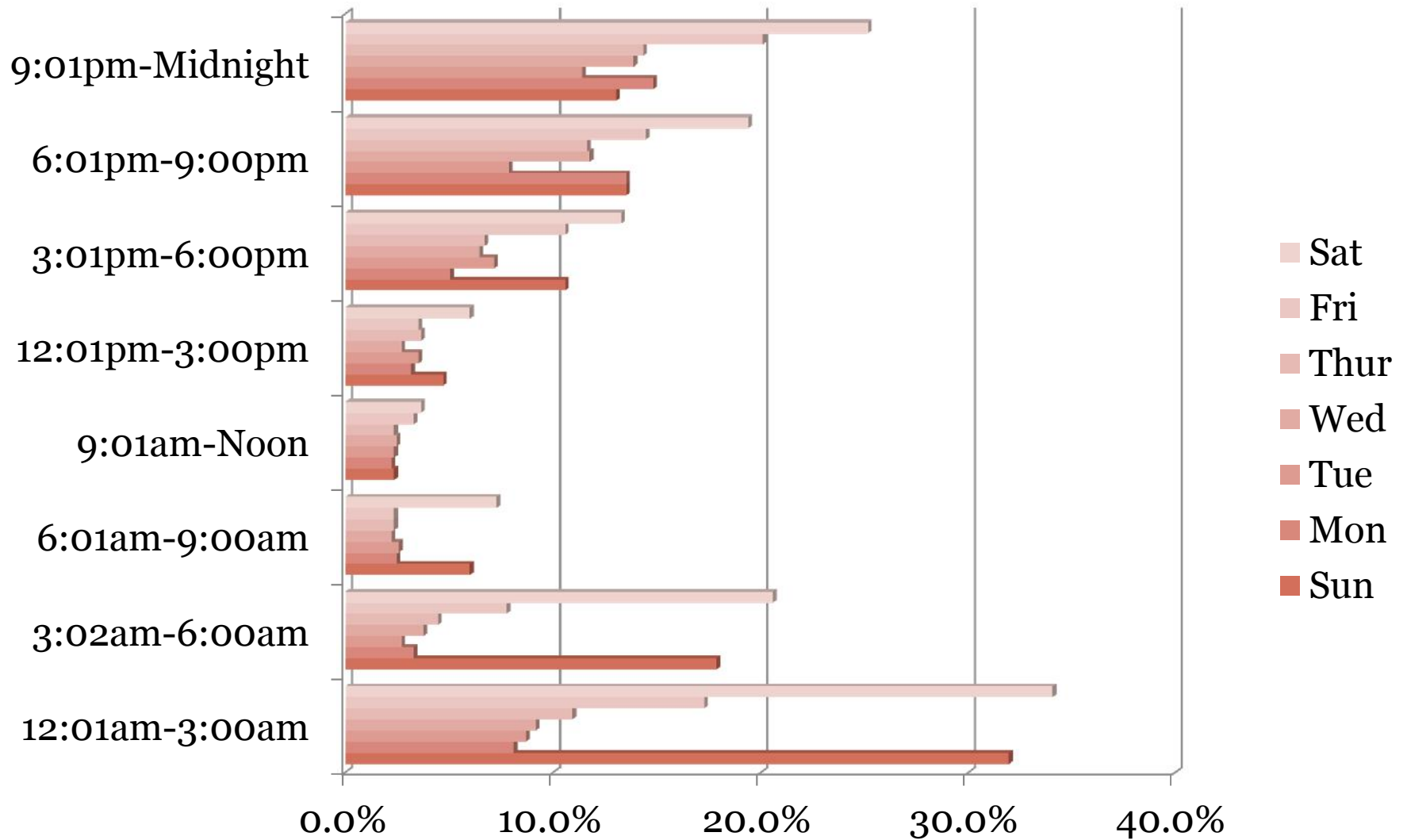


## F/SI Collisions by Time of Day & Day of Week, 2009-2013





## F/SI DUI Related Collisions by Time of Day & Day of Week, 2009-2013

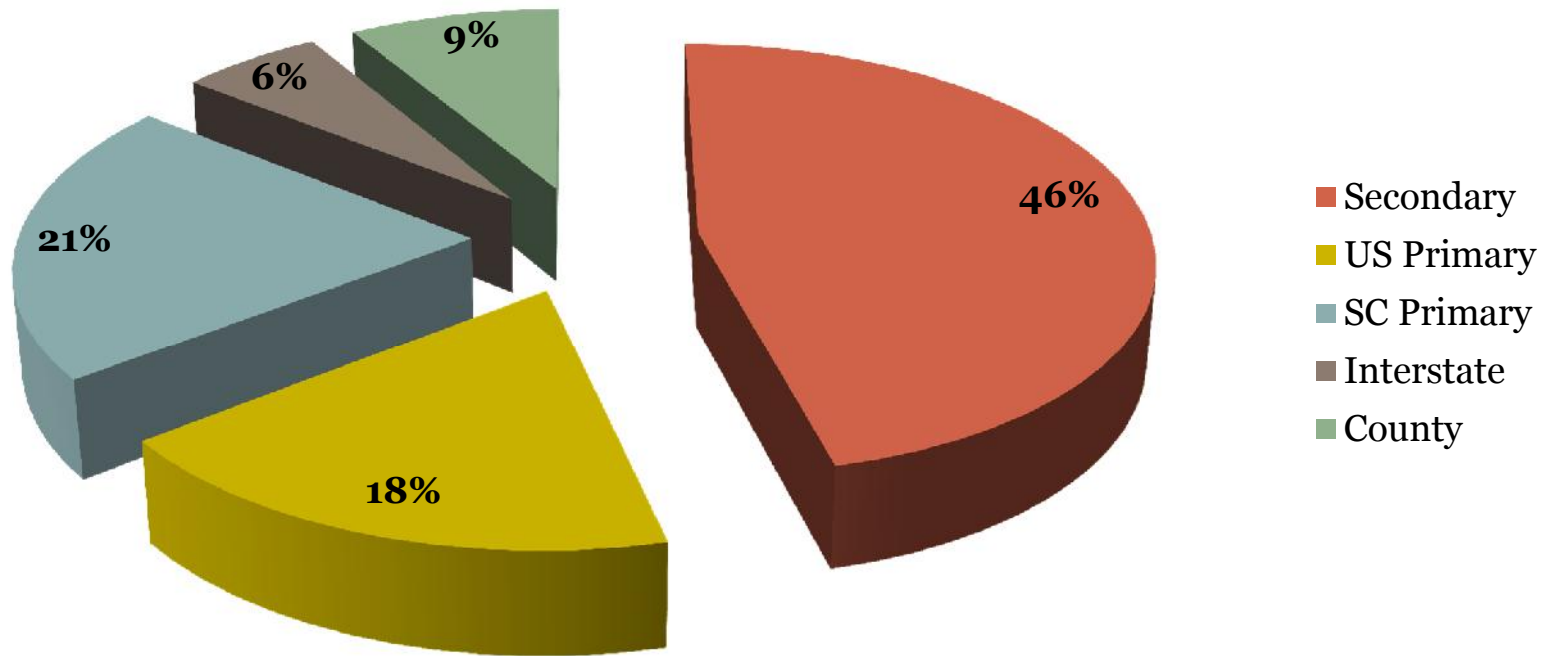


# Location



- We've talked about when, so what about where?

# DUI-Related F/SI Collisions by Route Category



All Fatal and Severe Injury DUI Alcohol and/or Drug Collisions  
South Carolina 2009-2013

County	2009	R A N K	2010	R A N K	2011	R A N K	2012	R A N K	2013	R A N K	2009- 2013	R A N K	Average Rank	Total Fatal & Severe Injury Collisions 2009-2013	R A N K	% DUI 2009-2013	R A N K
Kershaw	28	14	20	16	7	30	19	17	20	14	94	17	18.2	242	24	38.8%	1
Chesterfield	12	27	19	18	9	26	13	25	13	23	66	24	23.8	179	29	36.9%	2
Laurens	22	18	26	14	23	12	23	12	25	12	119	14	13.6	343	17	34.7%	3
Darlington	19	21	16	21	15	18	20	16	14	21	84	20	19.4	244	23	34.4%	4
Lexington	48	4	46	6	59	2	59	3	38	7	250	4	4.4	732	8	34.2%	5
Oconee	14	26	19	18	12	23	21	15	8	28	74	22	22.0	222	25	33.3%	6
Chester	12	27	15	23	9	26	8	30	8	28	52	29	26.8	159	30	32.7%	7
Williamsburg	22	18	12	26	4	34	12	28	14	21	64	25	25.4	196	27	32.7%	8
Pickens	33	13	32	9	27	11	15	19	19	15	126	13	13.4	412	15	30.6%	9
Newberry	9	33	15	23	6	32	13	25	12	24	55	28	27.4	180	28	30.6%	10
Lancaster	20	20	20	16	15	18	24	11	16	18	95	16	16.6	311	20	30.5%	11
Aiken	39	8	34	8	30	9	23	12	23	13	149	10	10.0	492	11	30.3%	12
Orangeburg	35	11	30	10	23	12	15	19	31	10	134	12	12.4	450	13	29.8%	13