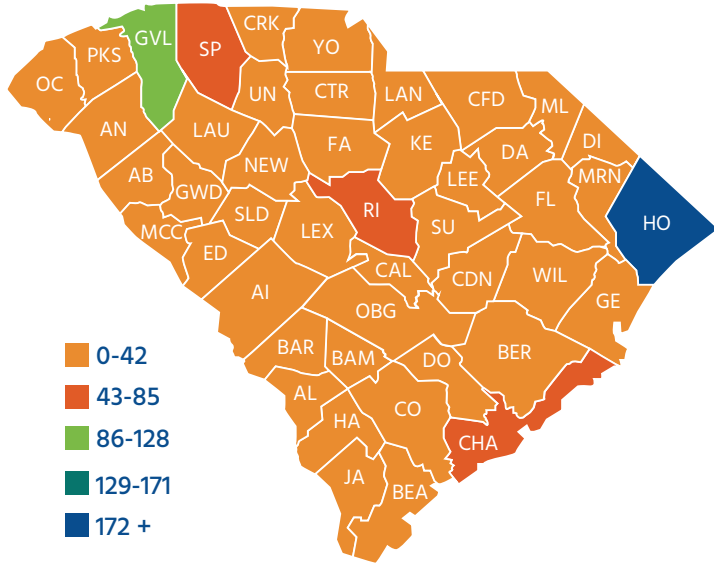


MOPED SAFETY FACT SHEET

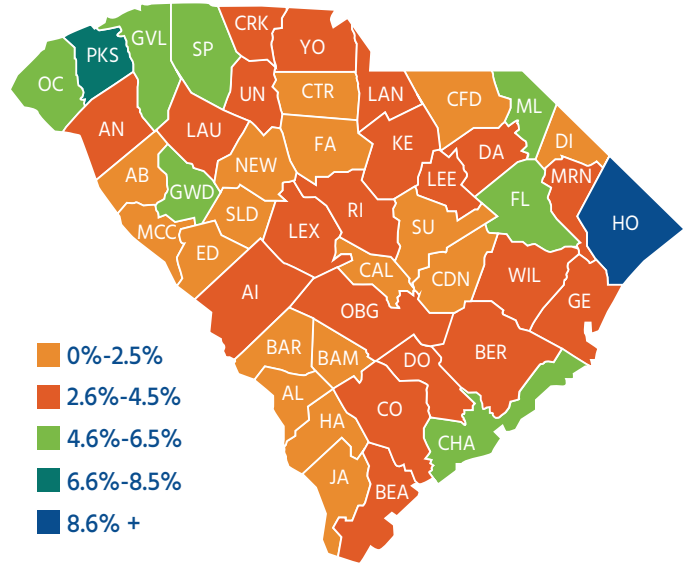


DID YOU KNOW: **162** moped riders died and **741** were severely injured in traffic collisions between 2011 and 2015. In South Carolina, an average of 32 moped riders die each year in traffic collisions.

Moped-Involved Fatalities And Serious Injuries By County Total



Moped-Involved Fatalities And Serious Injuries By Percentage Of County Total



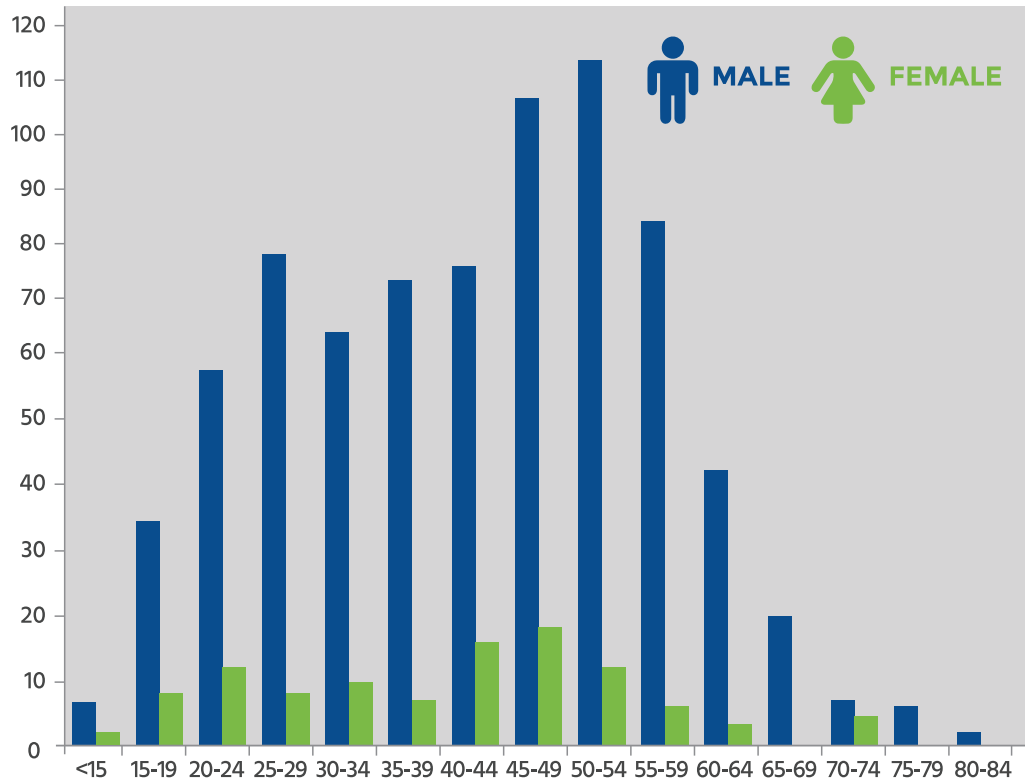
WHO WAS INVOLVED:

Male moped operators had a significantly higher involvement in collisions resulting in deaths or severe injuries.

The largest groups of male operators involved in these collisions were between the ages of 50-54 followed closely by 45-49. The largest group of female operators was between the ages of 45-49.

88% of moped operators involved in a fatal or serious injury collision were male.

Mopeds Involved In Fatal And Severe Collisions By Age And Gender

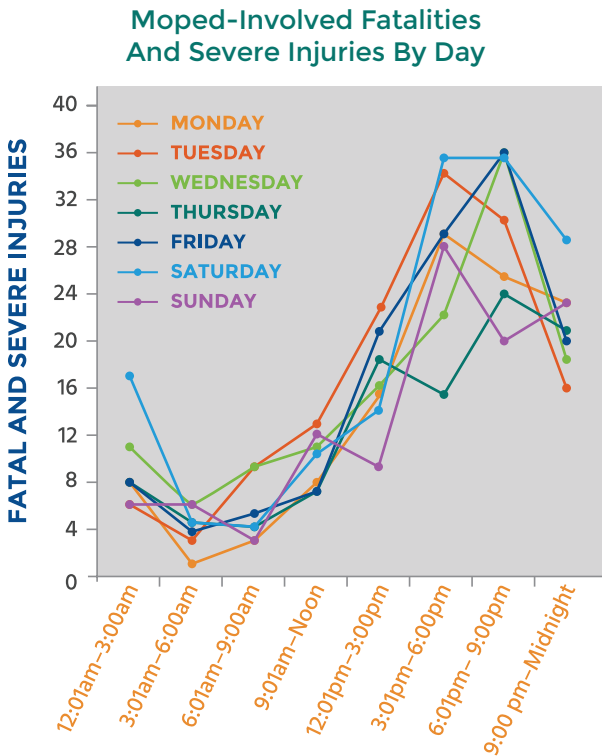


CONTRIBUTED TO: In roughly 37% of the fatal and severe injury collisions involving a moped, the moped was the only unit involved in the collision.

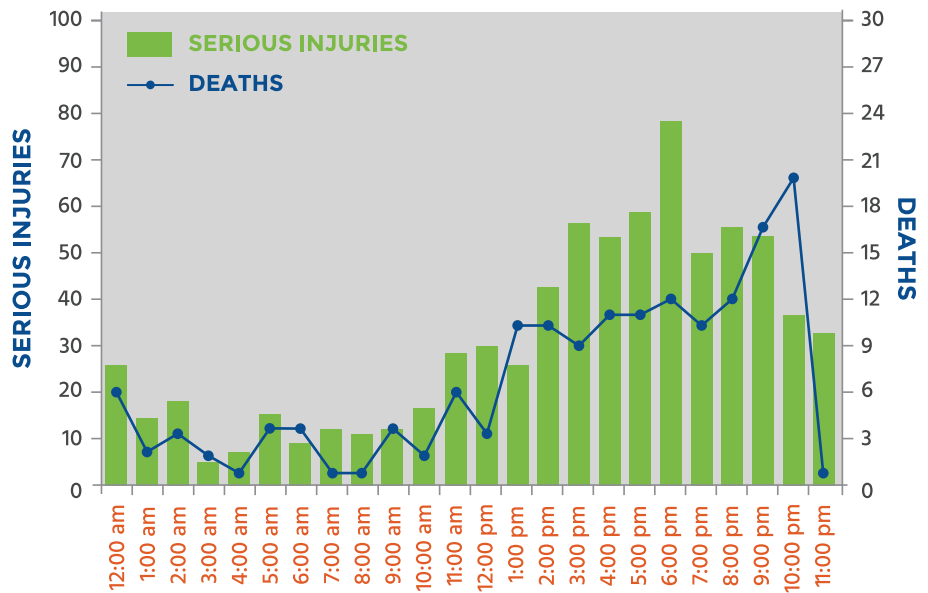
WHEN COLLISIONS OCCURRED:

77% of moped-involved fatal and severe injury collisions occurred between noon and midnight.

Moped-involved fatal and severe injury collisions occurred most frequently on Saturday (17%) and less frequently on Thursday (12%) and Sunday (12%).



Moped-Involved Fatalities And Severe Injuries By Time Of Day



94% vs. **37%**

OF 319 SINGLE-UNIT VEHICLE COLLISIONS, THE MOPED OPERATOR WAS THE SOLE CONTRIBUTOR TO THE COLLISION.

OF 545 MULTI-UNIT VEHICLE COLLISIONS, THE MOPED OPERATOR WAS THE SOLE CONTRIBUTOR TO THE COLLISION.

TAKE AWAY: SC law prohibits the operation of a moped at a speed in excess of 25 miles an hour.

CONTRIBUTING FACTORS:

Roadway departure was a factor in 38% of moped-involved fatal and severe injury collisions. Intersections were also a factor in 34% of these collisions.

Note: Traffic collisions often exhibit more than one factor which can account for overlap among the Emphasis Areas.

Relationships with Other SHSP Emphasis Areas

